

1 Power on **AVID HD IO interface**

2 Power on **preamps**

3 Power on **control surface**

4 Power on **dock**

5 Power on **Mac Mini**

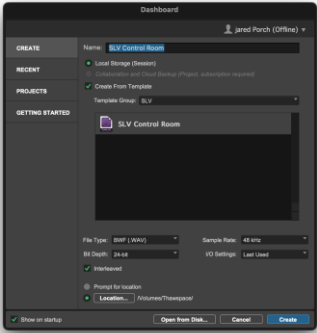
IMPORTANT – DO **NOT** TURN
ON SPEAKERS YET

Please **turn** over...



6 Launch Pro Tools 

7 Create new session from **SLV Control Room template** and save in Thawspace



8 Power on speakers **at rear**



9 Power on **headphone amp** in room 2b and plug in headphones



10 **Connect a mic** or instrument to an audio send in room 2b. (Instruments can connect with a DI box)



11 **Record enable** the corresponding track in Pro Tools



12 **Adjust level** on the corresponding preamp channel (enable phantom power here if needed).



13 **Press record** and then play to start   